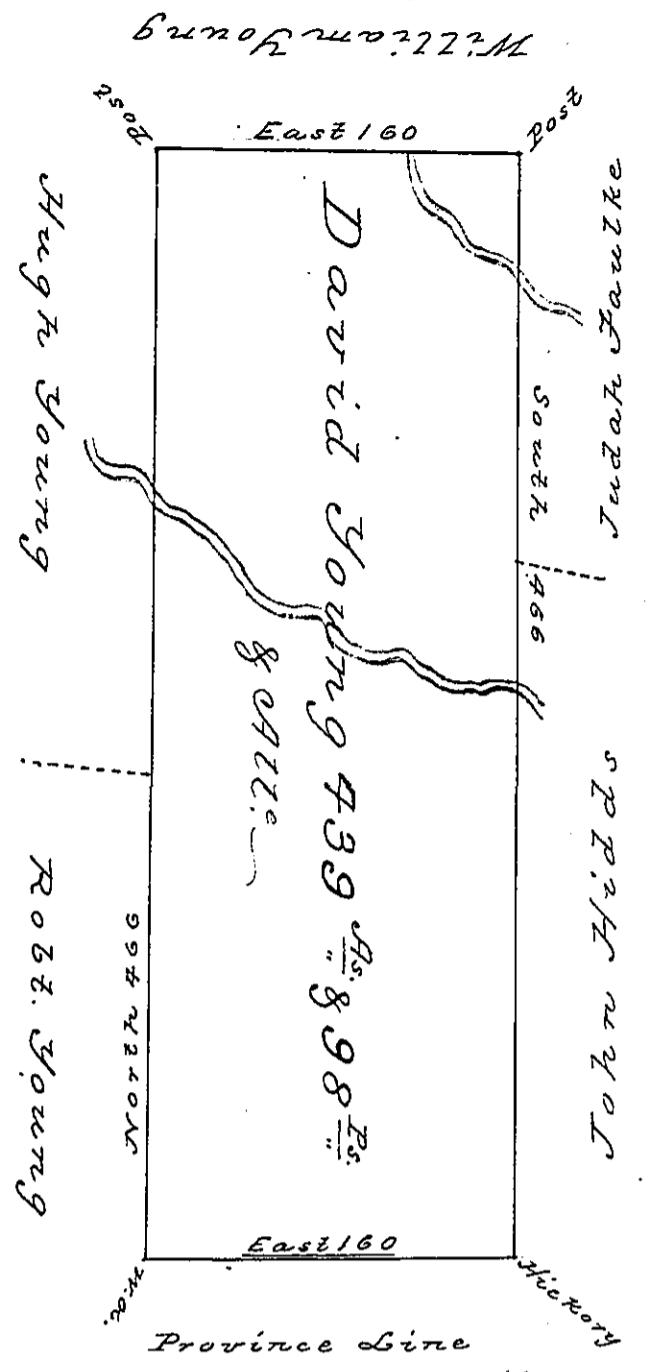


19. 260



Situate on the Waters of Fifteen Mile Creek in Colerain Township Bedford County Containing 439 Acres & 98 perches with the usual allowance of six per cent for Roads &c. Surveyed for David Young the 6<sup>th</sup> day of October 1794 on Warrant dated the 21<sup>st</sup> day of February 1794.

To Daniel Brodhead Esq. Sg. } George Woods Junr. D. C.

Examined by me December 14<sup>th</sup> 1808  
 To Samuel Cochran Esq. } John Anderson  
 Surveyor General } Deputy Surveyor

IN TESTIMONY that the above is a copy of the original remaining on file in the Department of Internal Affairs of Pennsylvania, made conformably to an Act of Assembly approved the 16th day of February, 1833, I have hereunto set my Hand and caused the Seal of said Department to be affixed at Harrisburg, this  
 Sixth day of October 1896 -

James W. Latta  
 Secretary of Internal Affairs.